

Has your school recruited an Early Career Teacher to start in January 2025?



All ECTs must be signed up for an Induction Assessment Programme as well as an ECF Training Programme. Follow our easy sign-up process to be ready to welcome your ECTs in January 2025

SIGN UP PROCESS

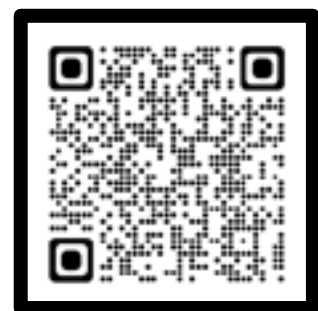
Register your ECT with the Appropriate Body for their induction assessment programme

Whether an ECT is just starting their two-year induction programme or transferring from another school, they must be registered with an Appropriate Body by their school for their statutory assessment induction programme.

The role of the Appropriate Body is to:

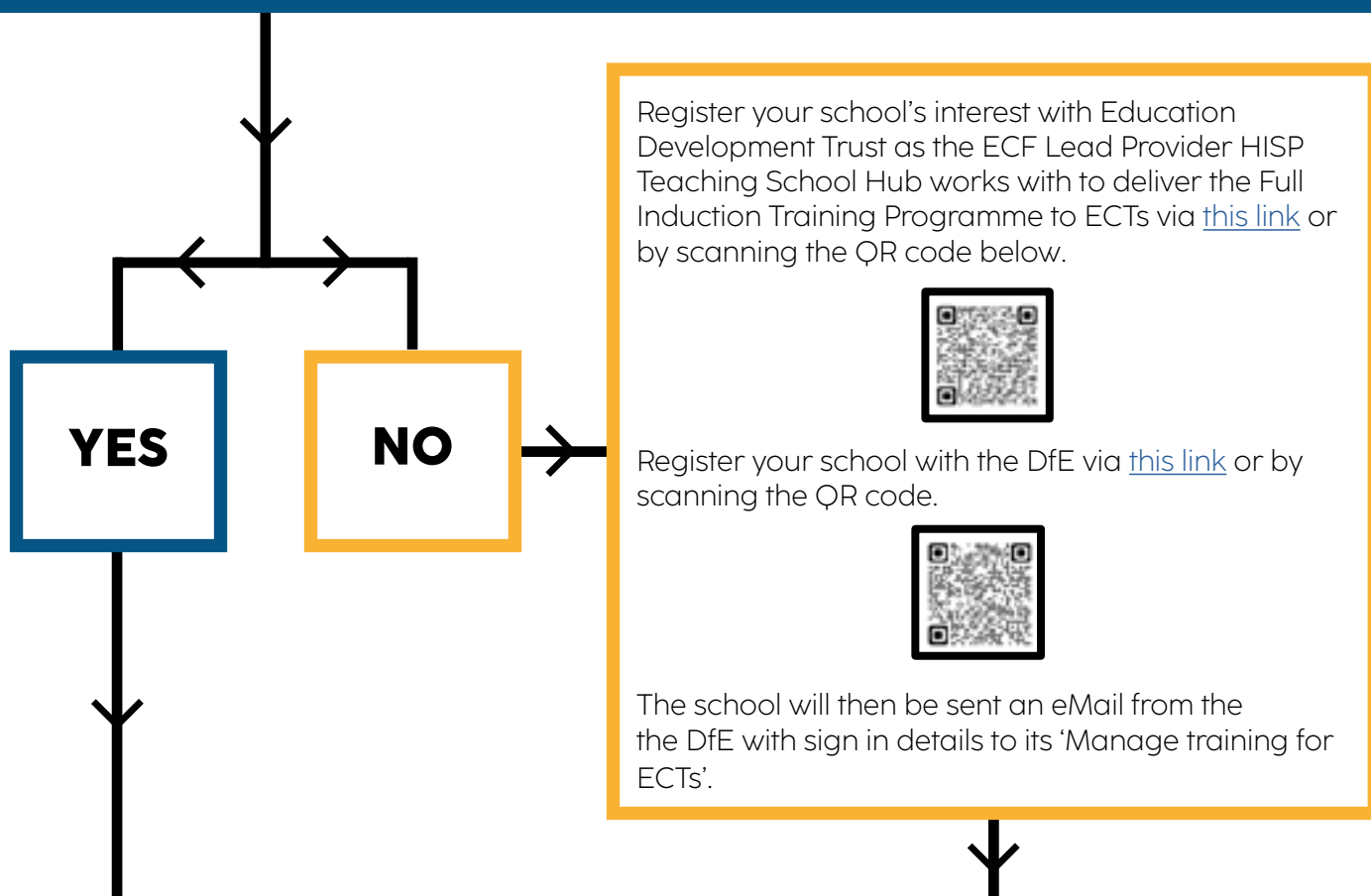
- Register ECTs with the Teaching Regulation Agency
- Monitor the support Early Career Teachers receive
- Monitor assessment points

HISP Teaching School Hub is an Appropriate Body. Register your ECT with us via [this link](#) or scan the QR code:



Register your ECT for an ECF Full Induction Training Programme

Does your school already have ECTs and work with HISP Teaching School Hub and Education Development Trust?



Register your school's interest with Education Development Trust as the ECF Lead Provider HISP Teaching School Hub works with to deliver the Full Induction Training Programme to ECTs via [this link](#) or by scanning the QR code below.



Register your school with the DfE via [this link](#) or by scanning the QR code.



The school will then be sent an eMail from the the DfE with sign in details to its 'Manage training for ECTs'.

Log into the DfE website 'Manage training for ECTs' via [this link](#) and input the ECT, mentor and Induction Tutor details.

Schools must select whether the ECT is a new or transferring ECT, link an ECT to a mentor and sign them up to the correct cohort.

Schools will need each participants TRN and DOB to complete registration.

Once complete, the DfE performs validation checks and passes details to the Lead Provider, Education Development Trust who will then liaise with HISP Teaching School Hub as its delivery partner.

EDT will issue log in details once these checks have taken place.



Need support with registrations, please contact HISP Teaching School Hub

ab@hisptsh.org
ecf@hisptsh.org